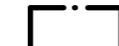

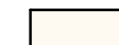

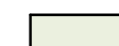
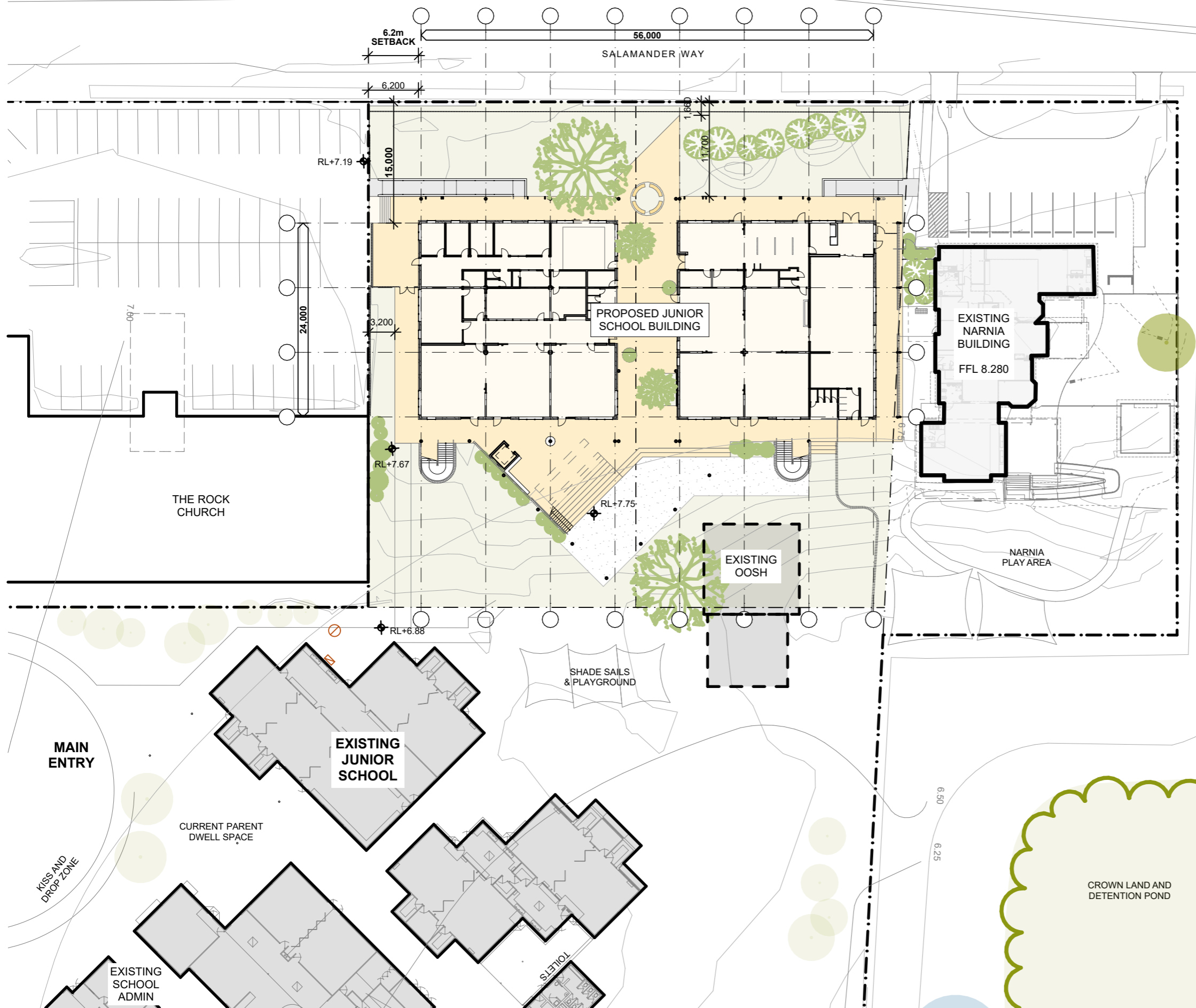


Developed Design

1. Dimensions are in millimetres unless otherwise shown.
2. Work to given dimensions. Do not scale from drawing.
3. Check all dimensions on site prior to construction and fabrication.
4. Bring any discrepancies to the attention of the proprietor & architect.

LEGEND

-  - CAMPUS BOUNDARY
-  - EXISTING SCHOOL BUILDINGS
-  - PROPOSED JUNIOR SCHOOL BUILDING
-  - PROPOSED JUNIOR SCHOOL DECKING
-  - PROPOSED JUNIOR SCHOOL LANDSCAPING



Version 3.1 (18 August 2021)

BUILDING PLAN ASSESSMENT

Clear of Hunter Water Assets

Reference No: 35555

Water available for connection
 Sewer available for connection

Only valid for 35555

Development Assessment (Section 50) application has been submitted and is being reviewed by Hunter Water. A Hydraulic Design Assessment application is required if development is larger than 2 units or commercial/industrial.

Date Processed: 22 September 2021
Applicant: Barr Planning - Kirra Somerville

Property Location: 182 SALAMANDER WAY, SALAMANDER BAY NSW 2317

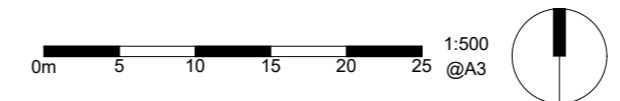
PLEASE TAKE INTO CONSIDERATION

This is not a compliance certificate. This stamp indicates that Hunter Water has undertaken an initial assessment of the proposed development to identify possible impacts to our infrastructure. Conditions of Hunter Water easements apply. For information on Hunter Water's processes please refer to our 'Land Development Manual' on our website or contact us on 1300 657 657.



4315 DA1009
RevJ 12.08.21

Proposed Site Plan
St Philip's Christian College Port Stephens - Junior Building
182 Salamander Way, Salamander Bay



Drawing and design © SHAC Pty Ltd. The signed control copy of this drawing is held by SHAC Pty Ltd. | Ref: BIMcloud: BIMSERVER24 - BIMcloud Basic for ARCHICAD 24/4315 SPCC Port Stephens Junior School/4315.005. 2021 Junior School date: 12-Aug-21 time: 3:49 PM